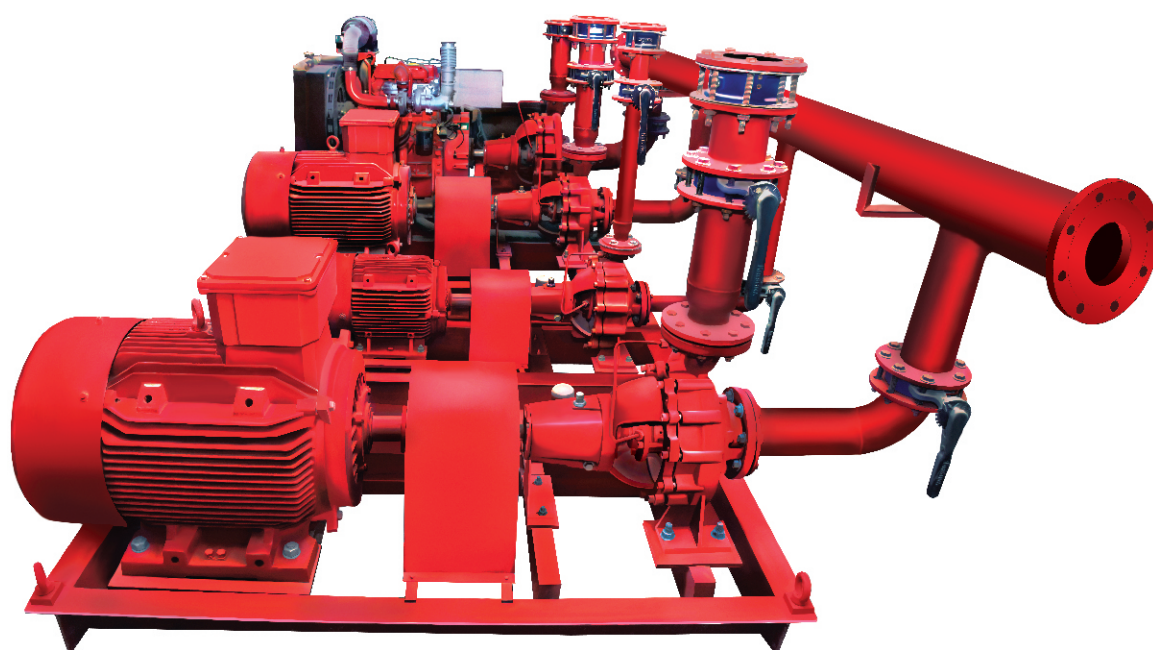


Fire Fighting Pumps And Systems

Centrifugal pumps according to ISO 5199 and ISO 2858 / EN 22858 (DIN 24255 & 24256)



The SPXFLOW Johnson pump has decades of experience of manufacturing & supply of pumps to various market segments including but not limited to chemical, pharmaceutical, water and waste water, distillery, oil & gas, refinery, petrochemical, marine and ship building. The core competency lies with the design and manufacturing of pumps and systems for the pumping solutions right from plain water to water with solids/sludge, acidic to alkaline solutions and high viscous liquids.

The firefighting pump series covers an extensive range of centrifugal pumps to be supplied with combination of Electrical motors or Diesel engines. SPXFLOW Johnson pump proven technology ensured world class performance of pump sets to keep every premises / establishment safe against fire hazards.

Based in Charlotte, North Carolina, SPX FLOW, Inc (NYSE: FLOW) is a global, multi-industry manufacturing leader with approximately \$ 2.5 billion in annual revenue, operations in more than 35 countries and over 8,000 employees. The company's highly-specialized, engineered products and technologies are concentrated in Flow Technology and energy infrastructure. Many of SPX FLOW's innovative solutions are playing a role in helping to meet rising global demand for electricity and processed foods and beverages, particularly in emerging markets. The company's products include food processing systems for the food and beverage industry, critical Flow components for oil and gas processing, power transformers for utility companies, and cooling systems for power plants. For more information, please visit www.spxflow.com.

SPXFLOW Johnson pump has been supplying pumps for fire fighting application to Indian defense sector for more than last two decades. Now company has been offering firefighting pumps to the industry. Our expertise is in developing quality fire pumps and pumping systems that performs reliably in case of emergency during fire hazard or drills in residential areas, office building, schools, industries, public gathering places, commercial sites etc.

All SPXFLOW Johnson firefighting pumps are equipped with their unique design of various series of pumps like "CN", "CC", "CH", "CV", "MSH", "MCH" and "MCV".

While Current offering is of horizontal end suction back pull out type pump (both motor as well engine driven) following types of pump also can be offered against special request.

Vertical execution
Self-priming execution
Sump pump

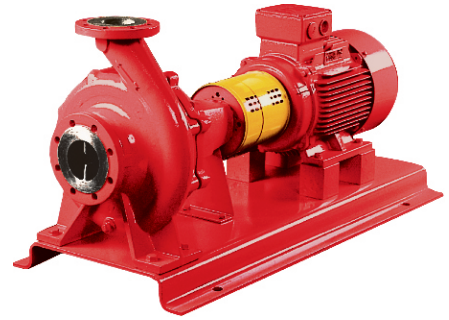
SPXFLOW Johnson Firefighting pumps and system offers.

- End suction back pull out type centrifugal pump with motor
- End suction back pull out type centrifugal pump with Diesel engine
- End suction back pull out type centrifugal pump or Multistage / Jockey pump with motor
- Skid inclusive of common base frame, coupling, 360 Deg. Coupling guard and foundation bolt.
- Auto changeover control panel with battery charging facility.
- Fuel tank, Batteries



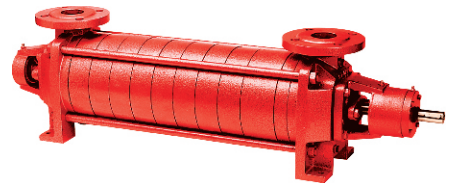
MAIN FIRE PUMP

Main fire pump includes
End Suction back pull out type pump
Packing / Mechanical seal Option
Electric motor / Diesel engine driven
With control panel



JOCKEY PUMP

Jockey pump includes
Single / Multi stage pump
Vertical or Horizontal installation option
Electric motor driven



CONTROL PANEL

Auto or manual mode
DOL and Star Delta operation
Type 2 co-ordination
Common Incomer for starters with indicator, voltmeter and ammeter
Auto start & Manual stop with battery charging system for diesel engine driven pump
Customized panel can also be supplied against special requirement

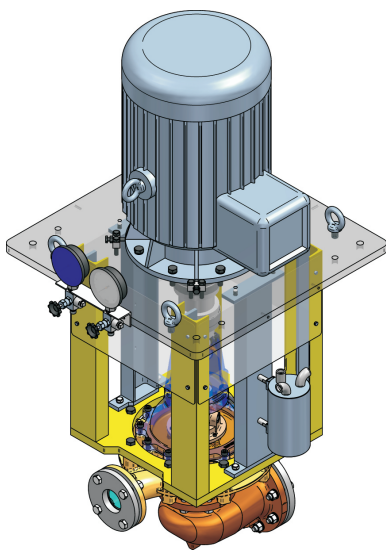


Fire Fighting Pumps And Systems

SPXFLOW



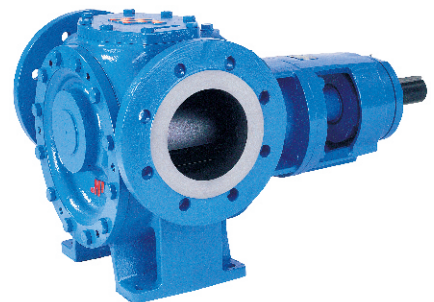
**Vertical Self Priming Pump
On board Ship**



Sump Pump



Foam Spraying Pump



SPX FLOW TECHNOLOGY (INDIA) PRIVATE LIMITED

Survey No. 275, Odhav Road, Odhav

Ahmedabad-382415, INDIA

P: +91 (0)79-22870311, 22873005

F: +91 (0)79-22870593, 22872522

E: johnson-pump.in@spxflow.com

For more information about our worldwide locations, approvals, certifications, and local representatives, please visit www.johnson-pump.com and www.spxflow.com

SPX Corporation reserves the right to incorporate our latest design and material changes without notice or obligation.

Design features, materials of construction and dimensional data, as described in this bulletin, are provided for your information only and should not be relied upon unless confirmed in writing.

JP_000_GB Version: 02/2014 Issued: 07/2014

Copyright © 2008, 2009, 2010, 2012, 2013 SPX Corporation